

iColor®

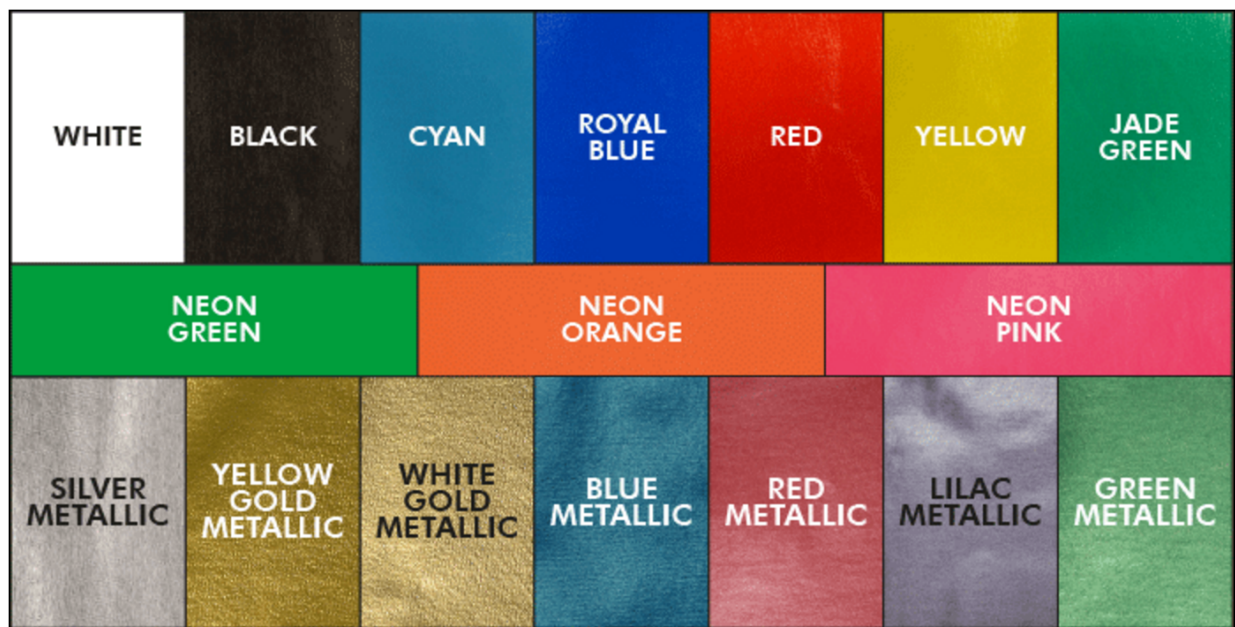
PRINTING SOLUTIONS

powered by **UniNet**

iColor® 2-Step Presto! Transfer Media Instructions

Temperature	Time	Paper Setting	Pressure
310°F / 154°C	120 Seconds	Transparency	5

The iColor® 2-Step Presto! Transfer Media set is for both monochrome and CMYK Laser/LED printers and copiers. Print black and get white, metallic or neon colors! No cutting or weeding necessary!



iColor® 2-Step Presto! Transfer Media can transfer onto a variety of textiles and media such as cotton, polyester, 50/50 blends, polypropylene, felt, wood, paper and more! The white adhesive applied as a result of the 2-Step process enhances durability, opacity and vibrancy of your finished product.

iColor® 2-Step Presto! Transfer Media works at a higher temperature as compared to the iColor Premium paper (310°F / 154°C), so some care must be taken when pressing onto some types of synthetic material such as nylon or polyester. Spandex or lycra material is not recommended.

iColor® 2-Step Presto! Transfer Media is a weed-free system, ensuring little time is wasted picking and weeding your transfer prints. iColor® media enables you to produce detailed, quality images while dramatically reducing your production time.

Wash-tested for at least 30 washes at 104°F / 40°C, your images will remain durable and vibrant. Please follow the steps below for best results:

1. Place the Presto! Transfer sheet into the multipurpose tray of your printer, dull side up.
2. In the software printer settings, set the paper source to the 'Multi-purpose Tray'. Paper type should be 'transparency' and the page size should be 'Letter'. Don't forget to mirror the image.
3. Print the image.
4. Preheat the press to 310°F / 154°C. It is suggested that you preheat the press in the closed position for at least 30 seconds.
5. Place the printed image in the middle of the press with the printed side facing up. Place the adhesive sheet on top of the print, adhesive coated side down - the image and the adhesive should be face-to-face.
6. Press the two sheets together using a heat press at 310°F / 154°C for 120 seconds with medium pressure. Be sure to cover with kraft paper before pressing.
7. Open the press and while hot - rub the media with a piece of textile for five seconds. Wait another 5 – 10 seconds, then peel the adhesive sheet away from the transfer sheet diagonally in one slow, low and fluid motion. This should be done with the sheets on the press to minimize heat loss.
8. Discard the used adhesive sheet.
9. Trim the edges away from the transfer sheet - this will ensure no excess adhesive sticks to the garment.
10. Position the transfer sheet (print side down) onto the garment. It is suggested that you use heat resistant tape to secure the sheet to the garment. Otherwise, opening the press can cause the transfer sheet to lift prematurely.
11. Thread the garment onto the lower platen and press at 310°F / 154°C for 30 seconds with medium pressure. Be sure to cover the transfer sheet and garment with a Teflon sheet.
12. Remove the garment from the heat press and allow it to cool for at least five minutes.
13. Once the garment is completely cooled, carefully peel away the transfer sheet in one smooth, continuous rolling motion. The image will adhere to the garment. Removal while still warm could lead to an incomplete or faulty transfer.
14. Re-Pressing (fixing) the image into the garment is important for wash durability. Cover with kraft paper and re-press the image for roughly 20 seconds at 310°F / 154°C.
15. Wait a few seconds before removing the kraft paper. Peel slowly in one smooth, continuous motion.

TIPS: There are many variables that could produce different results. Specific steps may need to be altered based on:

- **Type and brand of Heat Press:** The temperature and duration varies slightly based on the heat press being used. All instructions are based on using a Hotronix Fusion press. Clam shell and swing away presses may also yield different results. Always place the transfer media in the middle of your heat press. Some heat presses do not have uniform heat and pressure distribution.
- **Type of garment:** Cotton, Polyester, Spandex and Lycra material all respond differently to heat. All instructions are based on cotton garments.

- **For best results, press print your image with the following settings:**

Paper Settings: Film, Foil, Transparency

Printer Settings: Multipurpose Tray

Image Mode: Mirror Image

Recommended Color Settings (CMYK Printers):

White or Metallic – 100% Cyan, 100% Black

Neon Green - 100% Cyan, 100% Yellow

Monochrome Settings: 100% Black with full density

- **If your presses are not pulling cleanly**, try removing the Teflon cover from the plate of the heat press. Adjusting the color mix of the print may help as well. The better the density, the cleaner the pull.

It is recommended to wash finished garments inside out in cold or warm water and low agitation.

For best results, hang to dry.

For additional assistance, view our step by step video – www.icolorprint.com/video